

Anti-EVL Rabbit pAb

Ref: AO-03-GB111026

Volume: 10, 25, 50 and 100 µl

Product Information

Description	EVL rabbit polyclonal antibody
Protein full name	Ena/VASP-like protein
Synonyms	Ena/vasodilator-stimulated phosphoprotein-like, Enah/Vasp-like RNB6Ena/vasodilator-stimulated phosphoprotein-like
Immunogen	Recombinant protein corresponding to Mouse EVL
Isotype	IgG
Purity	Affinity purification
Predicted MW.	45 kDa
Observed MW.	52 kDa
Uniprot ID	Q9UI08, P70429, O08719

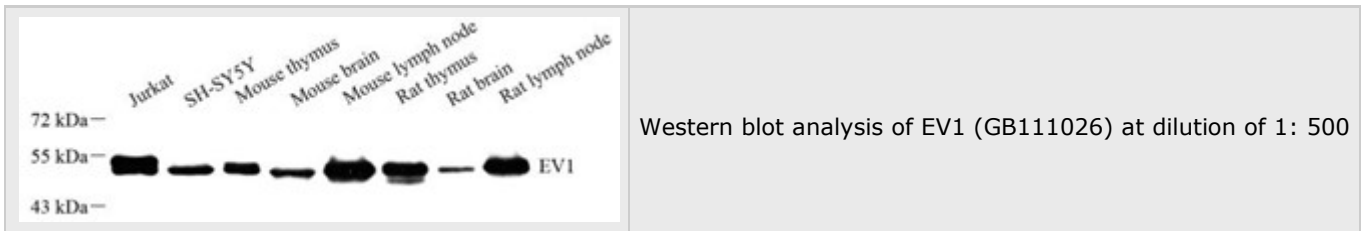
Applications

Applications	Species	Dilution	Positive Tissue
WB	Human, Mouse, Rat	1: 500-1: 1000	thymus, brain, lymph nodes

Background

Enah/Vasp-like (EVL) is a member of the Ena/VASP protein family. Ena/VASP proteins are actin-associated proteins involved in a range of processes that require dynamic actin remodeling such as axon guidance and lamellipodial and filopodial dynamics in migrating cells. EVL enhances actin nucleation and polymerization. There are two different isoforms, generated by alternative splicing.

Images



Storage

Storage	Store at -20 °C for one year. Avoid repeated freeze/ thaw cycles.
Storage Buffer	PBS with 0.02% sodium azide, 100 µg/ml BSA and 50% glycerol.

NOTE:

1. This product is intended for research only.
2. This product is recommended to dilute with the Primary Antibody Dilution Buffer ([G2025](#)) .

For Research Use Only!

