

Anti-GAPDH Mouse mAb

AO-03-GB12002

Product Information

Protein full name	Glyceraldehyde-3-phosphate dehydrogenase
Synonyms	GAPDH, GAPD, G3PD, HEL-S-162eP, glyceraldehyde-3-phosphate dehydrogenase
Immunogen	KLH conjugated Synthetic peptide corresponding to Mouse GAPDH
Uniprot ID	P16858
Isotype	IgG
Purity	Affinity purification
Subcellular location	Cytoplasm, Nucleus, Membrane
Predicted MW. / Observed MW.	36 kDa / 36 kDa

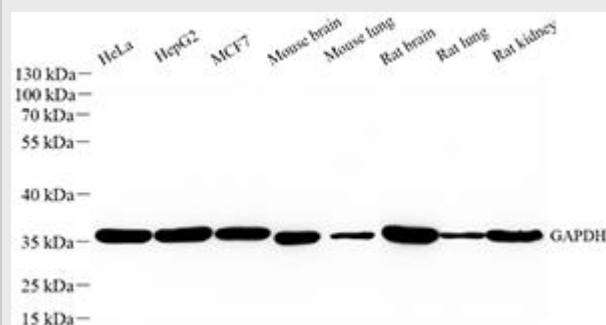
Applications

Applications	Species	Dilution	Positive Tissue
WB	Human, Mouse, Rat	1: 3000-1: 5000	brain, MCF7, HeLa
IHC/IF	Human, Mouse, Rat	1: 200-1: 1000	kidney, testis
ICC/IF	Human, Mouse, Rat	1: 1000-1: 2000	HeLa

Background

Actins are highly conserved proteins that are involved in various types of cell motility and are ubiquitously expressed in all eukaryotic cells. In vertebrates 3 main groups of actin isoforms, alpha, beta and gamma have been identified. The alpha actins are found in muscle tissues and are a major constituent of the contractile apparatus. The beta and gamma actins coexist in most cell types as components of the cytoskeleton and as mediators of internal cell motility.

Images



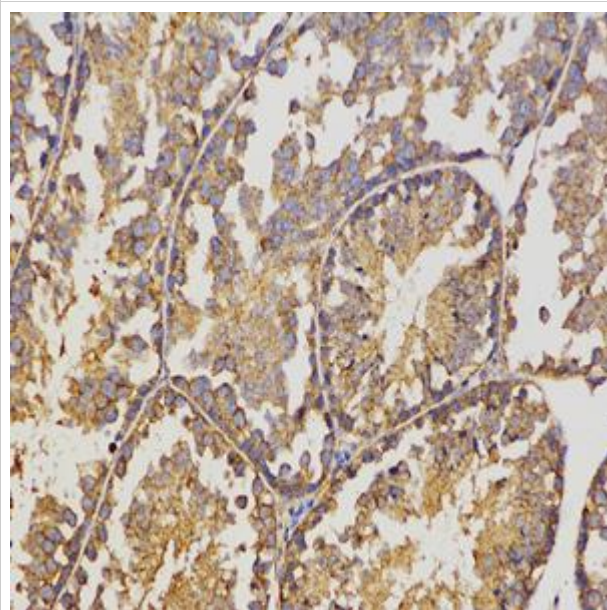
WB analysis of GAPDH (GB12002).

Sample: Protein treated by RIPA Lysis Buffer (G2002).

Blocking buffer: 3% Nonfat dry milk (GC310001) in TBST, RT, 1h.

Primary antibody: 1: 5000, 4°C overnight.

Secondary antibody: HRP conjugated Goat Anti-Mouse IgG (H+L) (GB23301), 1: 5000, RT, 1h.



IHC analysis of GAPDH (GB12002).

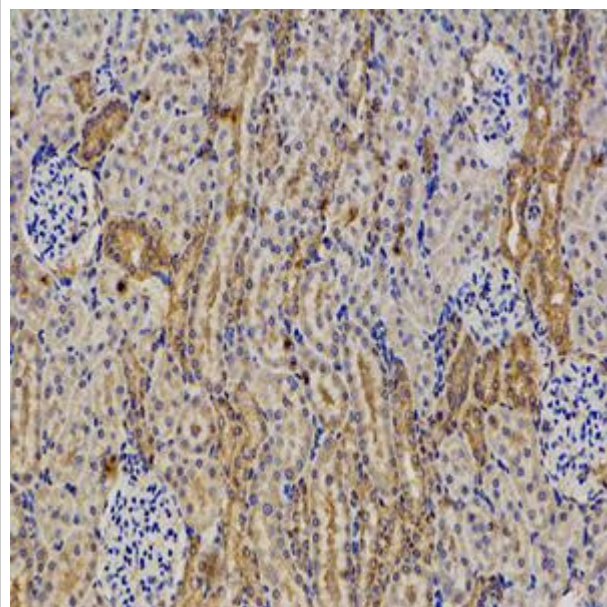
Sample: Mouse testis (Paraffin), 4% PFA (G1101) 12-24h.

Antigen retrieval: Citrate buffer (pH 6.0) (G1201), pressure cooker 2min.

Blocking buffer: 3% BSA in PBS (GC305010), RT, 30min.

Primary antibody: 1: 200, 4°C overnight.

Secondary antibody: HRP Goat Anti-Mouse IgG (GB23301), 1: 200 RT 1h.



IHC analysis of GAPDH (GB12002).

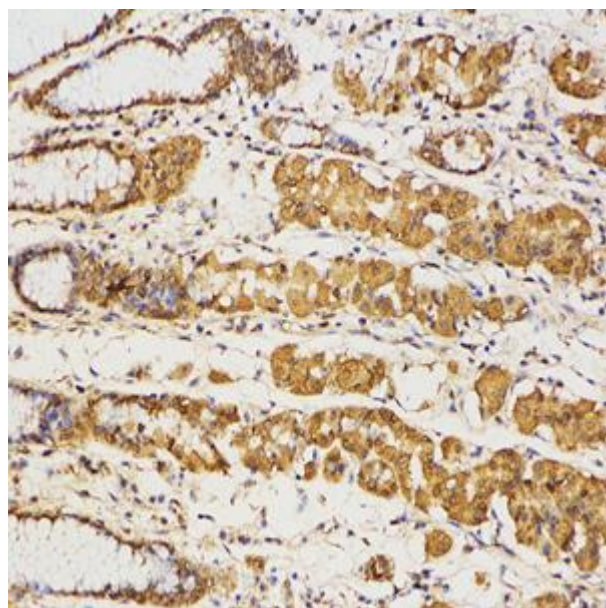
Sample: Rat kidney (Paraffin), 4% PFA (G1101) 12-24h.

Antigen retrieval: Citrate buffer (pH 6.0) (G1201), pressure cooker 2min.

Blocking buffer: 3% BSA in PBS (GC305010), RT, 30min.

Primary antibody: 1: 200, 4°C overnight.

Secondary antibody: HRP Goat Anti-Mouse IgG (GB23301), 1: 200 RT 1h.



IHC analysis of GAPDH (GB12002).

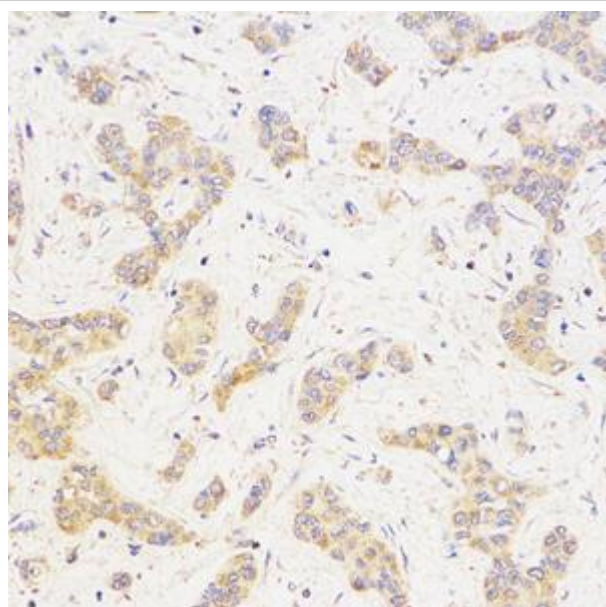
Sample: Human stomach (Paraffin), 4% PFA (G1101) 12-24h.

Antigen retrieval: Citrate buffer (pH 6.0) (G1201), pressure cooker 2min.

Blocking buffer: 3% BSA in PBS (GC305010), RT, 30min.

Primary antibody: 1: 200, 4°C overnight.

Secondary antibody: HRP Goat Anti-Mouse IgG (GB23301), 1: 200 RT 1h.



IHC analysis of GAPDH (GB12002).

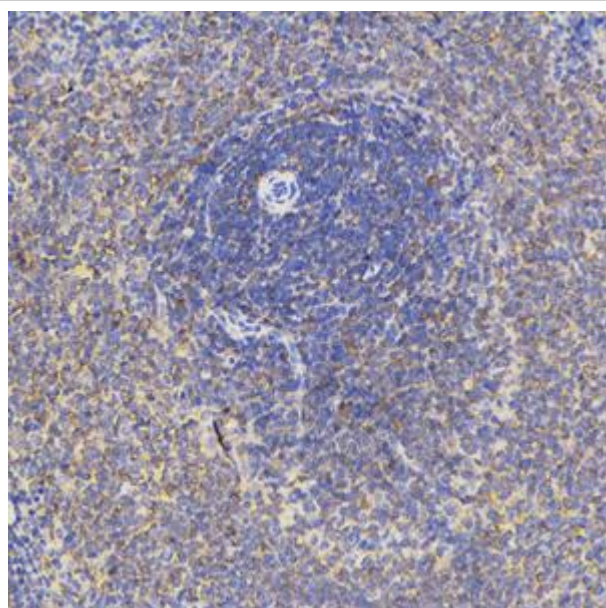
Sample: Human liver cancer (Paraffin), 4% PFA (G1101) 12-24h.

Antigen retrieval: Citrate buffer (pH 6.0) (G1201), pressure cooker 2min.

Blocking buffer: 3% BSA in PBS (GC305010), RT, 30min.

Primary antibody: 1: 1000, 4°C overnight.

Secondary antibody: HRP Goat Anti-Mouse IgG (GB23301), 1: 200 RT 1h.



IHC analysis of GAPDH (GB12002).

Sample: Rat spleen (Paraffin), 4% PFA (G1101) 12-24h.

Antigen retrieval: Citrate buffer (pH 6.0) (G1201), pressure cooker 2min.

Blocking buffer: 3% BSA in PBS (GC305010), RT, 30min.

Primary antibody: 1: 1000, 4°C overnight.

Secondary antibody: HRP Goat Anti-Mouse IgG (GB23301), 1: 200 RT 1h.

Storage

Storage	Store at -20 °C for one year. Avoid repeated freeze/ thaw cycles.
Storage Buffer	PBS with 0.02% sodium azide, 100 µg/ml BSA and 50% glycerol.

NOTE:

- 1.This product is intended for research only.
- 2.This product is recommended to dilute with the Primary Antibody Dilution Buffer ([G2025](#)) .

For Research Use Only!

