

Anti-SCNN1B Rabbit pAb

Ref: AO-03-GB112612

Volume: 10, 25, 50 and 100 µl

Product Information

Description	SCNN1B rabbit polyclonal antibody
Protein full name	Amiloride-sensitive sodium channel subunit beta
Synonyms	Beta-NaCH, Epithelial Na(+) channel subunit beta, Beta-ENaC, Nonvoltage-gated sodium channel 1 subunit beta, SCNEB, Scnn1b
Immunogen	KLH conjugated Synthetic peptide corresponding to Mouse SCNN1B
Isotype	IgG
Purity	Affinity purification
Predicted MW.	72 kDa
Observed MW.	72 kDa
Uniprot ID	P51168, Q9WU38

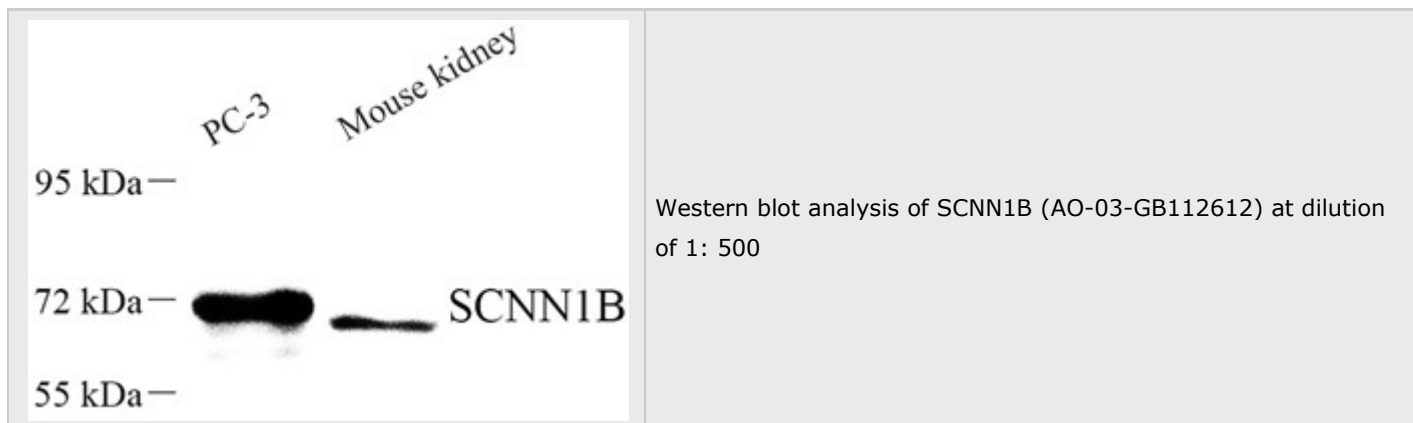
Applications

Applications	Species	Dilution	Positive Sample
WB	Human, Mouse	1: 500-1: 1000	kidney

Background

Sodium permeable non-voltage-sensitive ion channel inhibited by the diuretic amiloride. Mediates the electrodiffusion of the luminal sodium (and water, which follows osmotically) through the apical membrane of epithelial cells. Controls the reabsorption of sodium in kidney, colon, lung and sweat glands. Also plays a role in taste perception.

Images



Storage

Storage	Store at -20 °C for one year. Avoid repeated freeze/thaw cycles.
Storage Buffer	PBS with 0.02% sodium azide, 100 µg/ml BSA and 50% glycerol.

NOTE:

1. This product is intended for research only.
2. This product is recommended to dilute with the Primary Antibody Dilution Buffer ([G2025](#)) .

For Research Use Only!

