

Recombinant Anti-Claudin 1 antibody (Rabbit mAb)

Ref: AO-03-GB152543

Volume: 10, 25, 50 and 100 µl

Product Information

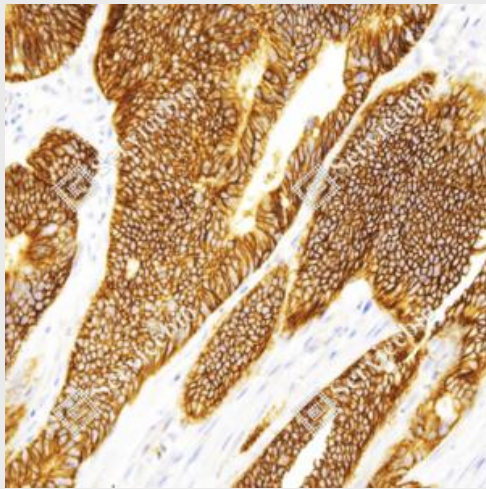
Protein full name	Claudin-1
Synonyms	Cldn1, SEMP1, CLD1, Senescence associated epithelial membrane protein 1, ILVASC, CLDN1, claudin 1
Immunogen	KLH conjugated Synthetic peptide corresponding to Human claudin 1
Uniprot ID	O95832
Isotype	IgG
Purity	Affinity purification
Subcellular location	Cell membrane

Applications

IHC/IF	Human, Mouse, Rat	1: 500-1: 1000	colon cancer, esophageal carcinoma, skin
---------------	--------------------------	-----------------------	---

Background

Claudins are a family of proteins that are the most important components of the tight junctions, where they establish the paracellular barrier that controls the flow of molecules in the intercellular space between the cells of an epithelium. 23 claudins have been identified. They are small (20-27 kilodalton (kDa)) proteins with very similar structure. They have four transmembrane domains, with the N-terminus and the C-terminus in the cytoplasm. Claudin-1 is expressed primarily in keratinocytes and normal mammary epithelial cells.



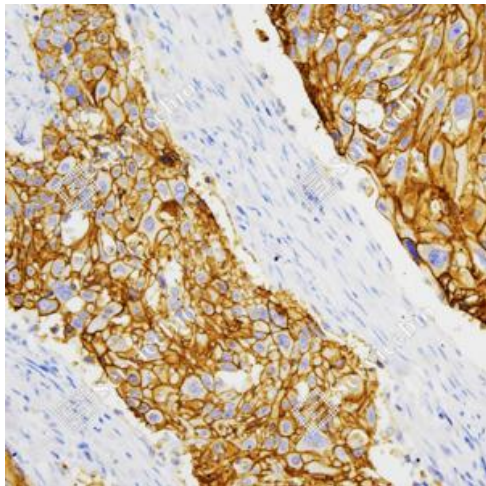
IHC analysis of Claudin 1(GB152543).

Sample: Human colon cancer, 4% PFA (G1101) 12-24h.

Antigen retrieval: Citrate buffer (pH 6.0) (G1201), pressure cooker 2 min.

Primary antibody: 1: 500, 4°C overnight.

Secondary antibody: HRP conjugated Goat Anti-Rabbit IgG (H+L) (GB23303), 1: 200, RT, 1h.



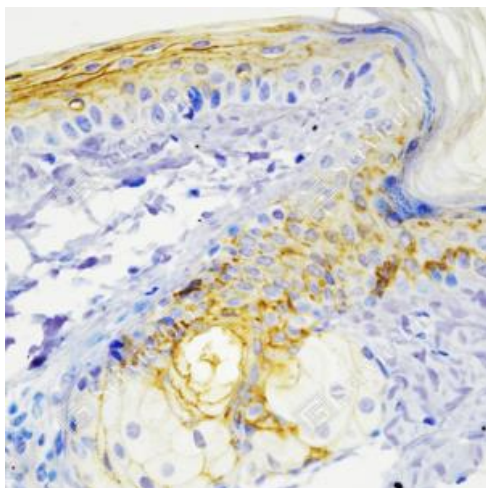
IHC analysis of Claudin 1(GB152543).

Sample: Human esophageal carcinoma, 4% PFA (G1101) 12-24h.

Antigen retrieval: Citrate buffer (pH 6.0) (G1201), pressure cooker 2 min.

Primary antibody: 1: 500, 4°C overnight.

Secondary antibody: HRP conjugated Goat Anti-Rabbit IgG (H+L) (GB23303), 1: 200, RT, 1h.



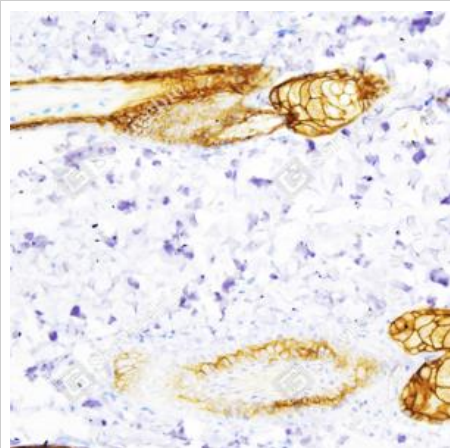
IHC analysis of Claudin 1(GB152543).

Sample: Mouse skin, 4% PFA (G1101) 12-24h.

Antigen retrieval: Citrate buffer (pH 6.0) (G1201), pressure cooker 2 min.

Primary antibody: 1: 500, 4°C overnight.

Secondary antibody: HRP conjugated Goat Anti-Rabbit IgG (H+L) (GB23303), 1: 200, RT, 1h.



IHC analysis of Claudin 1(GB152543).

Sample: Rat skin, 4% PFA (G1101) 12-24h.

Antigen retrieval: Citrate buffer (pH 6.0) (G1201), pressure cooker 2 min.

Primary antibody: 1: 500, 4°C overnight.

Secondary antibody: HRP conjugated Goat Anti-Rabbit IgG (H+L) (GB23303), 1: 200, RT, 1h.

Storage

Storage	Store at -20°C for one year. Avoid repeated freeze/thaw cycles.
Storage Buffer	PBS with 0.15% ProClin300, 100 µg/mL BSA and 50% glycerol.

NOTE:

- 1.This product is intended for research only.
- 2.This product is recommended to dilute with the Primary Antibody Dilution Buffer ([G2025](#)) .

For Research Use Only!

