

## HeLa cell line stably expressing eGFP tagged histone H1.2

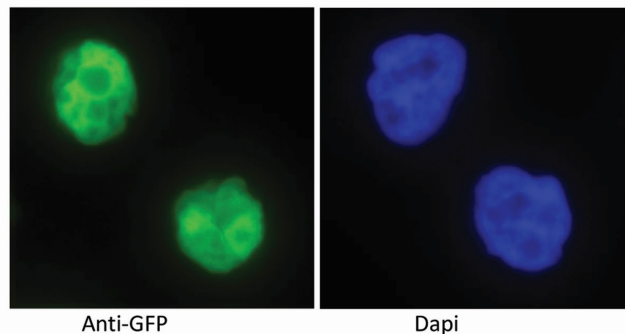
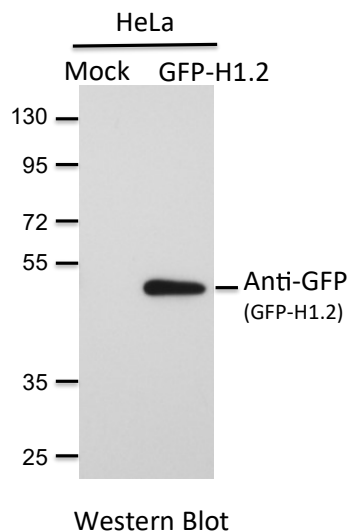
**Catalog N°:** AO-05-Designed-X0027

**Format:** 1mL frozen cell vial containing  $1 \times 10^6$  cells

**Description:** Human HeLa Cell line stably expressing N-terminal eGFP tagged histone H1.2

**Cell Line validation:** Human HeLa cell line stably expressing N-terminal eGFP tagged histone H1.2.

Expression of histone H1.2 is confirmed by Western blotting and confocal microscopy. Stable expression over multiple cell passages is confirmed. The doubling time for the cell line was approximately 20 h for the linear section of the growth curve. Mycoplasma negative by DNA staining and direct culture methods.



HeLa cell line stably expressing N-terminal eGFP tagged human histone H1.2. Left panel corresponds to immune detection of H1.2 with the anti-GFP antibody. Right panel shows the Dapi DNA staining.

**Storage:** Liquid nitrogen

**Guarantee:** Products guaranteed stable when stored properly.

*For research use only.*

